

**SCHLAGE**

*bright blue*

*Intelligent Access Management*

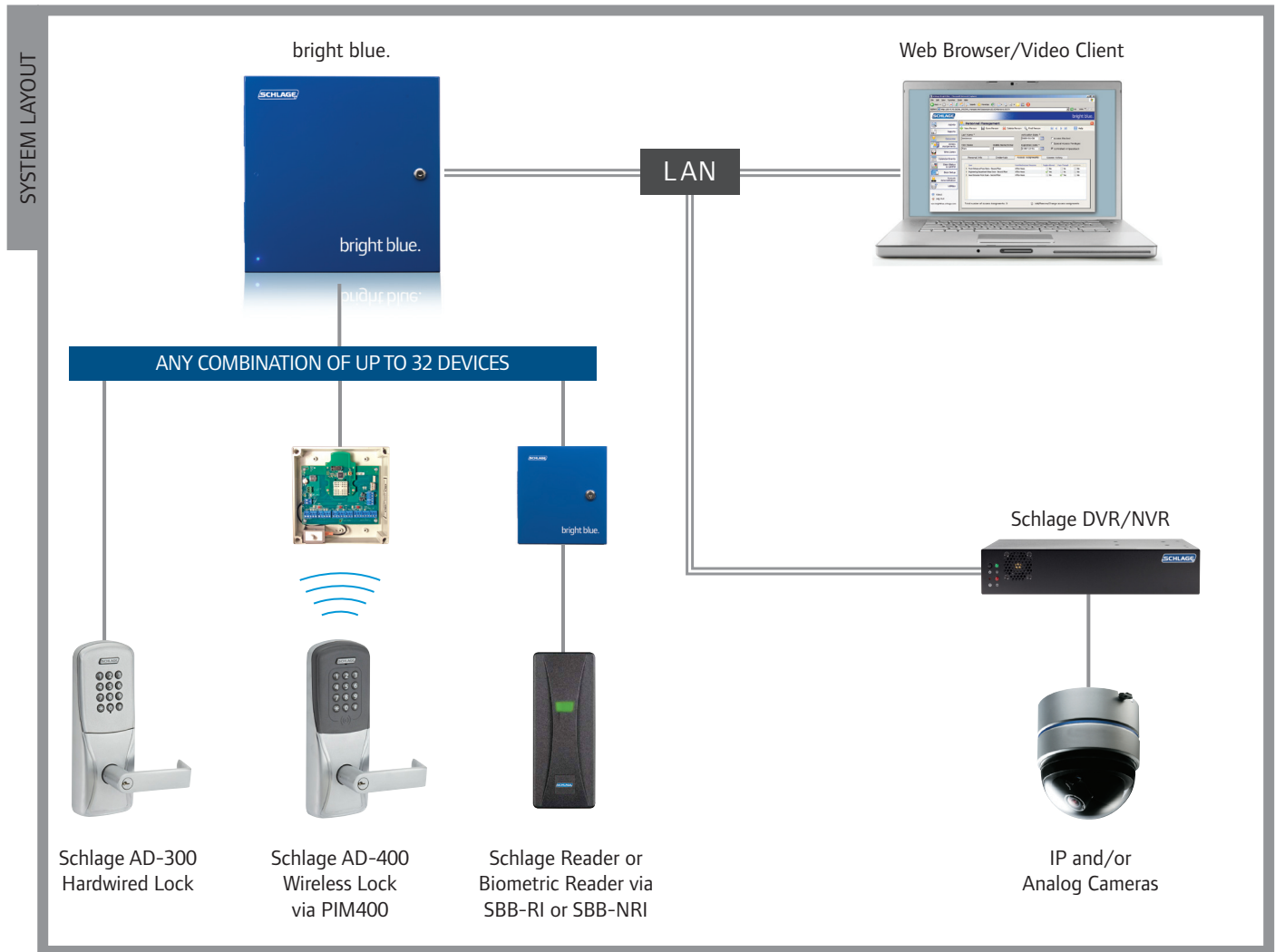
*bright blue.*

**IR** Ingersoll Rand  
Security Technologies

The concept is simple: Electronic access management that's secure and surprisingly affordable. Sometimes, simple is simply genius.

**bright blue™** from Schlage is a web-based access control system that gives you the freedom to access, manage and control your facility's points of entry from anywhere. It's powerful. It's affordable. It's easy to use.

This blue box proves that simple has a shape, and smart has a color.



## Speed.

You'll be up, running and thrilled in minutes.

The design that makes **bright blue** easy to use also makes it easy to install and set up. Using the plug-and-play approach, **bright blue** is designed to make configuration hassle free. This simplicity is what sets it apart from other systems.

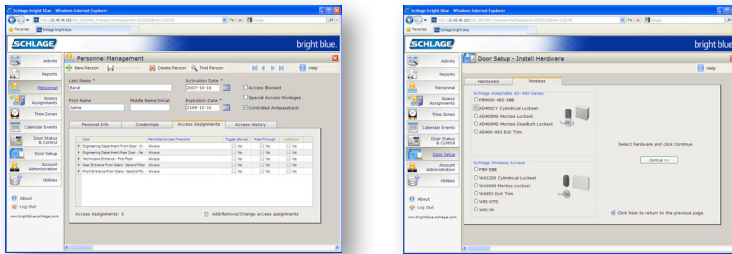
Everything you need for real security and unmatched accessibility is in the box. Simply connect **bright blue** to your existing network and you're in control from anywhere there's internet access.

## Simplicity.

We worked hard to make **bright blue** easy.

We obsessed over **bright blue** so you wouldn't have to. Every element of the system was designed to make it easy to use and easier to love. It starts when you set up the system. User-friendly configuration wizards and helpful tips make the process incredibly simple. Training is a breeze, too. Even novice computer users will learn how to log on and start managing access in no time.

With **bright blue** it's easy to add cardholders and set up new doors. You can even assign personnel access to different doors based on their time schedules, security levels and job requirements. And of course, because **bright blue** is a web-based application, you can do it all from any computer with internet access. That means you're free to go wherever business takes you.



## Security.

What sets **bright blue** apart is what sets you free.

**bright blue** is as secure as it is intelligent. And that's really saying something. Its Linux operating system offers reassuring stability and greater security from external threats. Of course, internal threats have to be considered as well. That's why **bright blue** also provides User, Operator and Administrator log-on access levels. Each level provides a different set of access rights to the system. You're in control of what each person is authorized to manage or view.

Make your system even brighter with bright blue's integrated video system – you'll enhance your security and peace of mind.

With **bright blue** you're always secure, and always in control.

## **bright blue** IS THE SMART SOLUTION FOR:

- Small and medium commercial offices
- Medical and dental offices
- K-12 Schools
- Property management
- Houses of worship
- Retail

## **bright blue** SUPPORTED DEVICES INCLUDE:

- Schlage AD-Series networked (hardwired or wireless) electronic locks
- Schlage proximity and smart card readers
- Industry standard proximity, smart card and magnetic stripe readers

## **bright blue** SYSTEM FEATURES INCLUDE:

- Support for up to 32 doors and 5000 cardholders
- Pre-configured and network ready
- Application wizards for ease of use
- Standardized reports
- System back-up
- Access anytime, anywhere, with a network connected computer
- Employee access activity monitor
- Anti-passback function to eliminate unauthorized entry
- Manual overrides to temporarily unlock doors
- Native communication to Schlage's AD-Series networked (hardwired or wireless) electronic locks
- Holiday and event scheduling
- Minimal training required
- Door status monitoring
- Built-in web server
- Flashable firmware for future upgrades
- Remote access and administration
- Video integration option

## Savings.

**bright blue** protects your budget, too.

Because **bright blue** is a web-based access system, it's inherently more cost-effective. There's no need to buy a dedicated computer or new software. Simply plug in the blue box and go.

As your business grows, **bright blue** will grow with you. You can add new locks and cardholders at any time, so the system won't become obsolete. Plus, when you use Schlage's AD-Series electronic locks, the need for reader interfaces and other door hardware is eliminated, resulting in hundreds of dollars in savings per door.





Ingersoll Rand's Security Technologies sector is a leading global provider of products and services that make environments safe, secure and productive. The sector's market-leading products include electronic and biometric access-control systems; time-and-attendance and personnel scheduling systems; mechanical locks; portable security; door closers, exit devices, architectural hardware, and steel doors and frames; and other technologies and services for global security markets.

877-671-7011

[www.schlage.com](http://www.schlage.com) [www.ingersollrand.com](http://www.ingersollrand.com)